

ONE STOCKPORT

ALL TOGETHER AS ONE



ONE HEART

ONE HOME

ONE FUTURE

OUR VISION FOR 2030

Contents

SECTION ONE

- 4 Introduction
- 5 This is Stockport
- 6 Our journey
- 7 Shaping our plan
- 9 What we heard
- 10 We have so much to be proud of
- 12 The opportunities and challenges that shape our vision

SECTION TWO

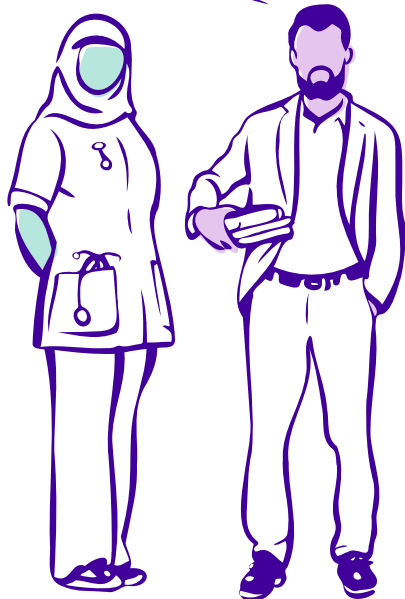
- 15 Our vision
- 16 Many places coming together to be stronger as one
- 18 Our values
- 19 Delivering One Stockport
- 21 One heart
 - A caring and growing Stockport
 - A healthy and happy Stockport
 - A strong and supportive Stockport
- 34 One home
 - A fair and inclusive Stockport
 - A flourishing and creative Stockport
 - A climate friendly Stockport
- 47 One future
 - An enterprising and thriving Stockport
 - A skilled and confident Stockport
 - A radically digital Stockport
- Notes

SECTION ONE

- 4 Introduction
- 5 This is Stockport
- 6 Our journey
- 7 Shaping our plan
- 9 What we heard
- 10 We have so much to be proud of
- 12 The opportunities and challenges that shape our vision



Welcome TO OUR VISION FOR 2030



One heart, One home, One future – One Stockport.

Our vision sees us all working together to develop a Borough which is inclusive, caring, enterprising and full of ambition.

Stockport is made up of citizens, entrepreneurs, employers and leaders who are proud of where they live and what they stand for. Through working together and supporting each other we can create a Borough which gives everyone a voice and an opportunity to celebrate its differences and where unique experiences can be shared.

This plan has been jointly developed in partnership across a number of Stockport based organisations and stakeholders, including: Stockport Council, Stockport Clinical Commissioning Group, Stockport Foundation Trust, Pennine Care, Viaduct Stockport, Mastercall, Stockport Homes, Greater Manchester Police, Greater Manchester Fire and Rescue Service, Department for Work

and Pensions, School and College leaders, Stockport Economic Alliance, Stockport's Voluntary, Community, Faith and Social Enterprise (VCFSE) Forum, Sector3, Stockport Race Equality Partnership, Stockport Cultural Network, Stockport Health and Wellbeing Board, Safer Stockport Partnership and Stockport Family Partnership Board.

When we talk about 'we' and 'our' within our plan, this means the people who live, work, learn and enjoy Stockport... residents, businesses, community organisations, charities and public services.

This is a shared plan.

Everyone has an important part to play in addressing the challenges we need to overcome to ensure we can work together to create One Stockport for everyone - One heart, One home, One future.

Why live
anywhere else?



The Jolly Sailor – Davenport

This is STOCKPORT

Stockport is a community of innovators. We are a place that makes itself, with a rich history of entrepreneurialism and creativity.

We're proud of our communities, their unique neighbourhoods, local villages and district centres – we are a community of communities who celebrate the many places that make Stockport the Borough it is – whether these be where we live, work or enjoy spending time.

We're part of Greater Manchester but we're also lucky to have Cheshire and the Peak District on our doorstep, sharing wide open countryside and farmland. Our proud history is a shared history which is woven throughout our architecture and communities.

This is an exciting time to be living and working in Stockport. With ambitious regeneration of our town and district centres, proud local business and communities, access to great education, increased investment in the Borough's infrastructure the growth of our local business community or our thriving Voluntary, Community, Faith and Social Enterprise community - Stockport really is a destination of choice for many.

United in the face of the coronavirus pandemic, our communities have worked hard to create an ambitious, connected and caring Borough, which has worked together to overcome the challenges.

We are a confident and ambitious Borough - unafraid to lead, face challenges together and carve our own path - why live anywhere else?

Perfume
Essence

Our JOURNEY

We developed this plan together during 2020, a unique and unprecedented time for everyone.

The UK and the rest of the world tackled a global pandemic on a scale that nobody had experienced before. It challenged us on every level and forced us to adapt to a new way of living and working across our Borough. If 2020 taught us anything, it's that we're stronger working together.

Our residents, businesses, schools, colleges, community, creative and voluntary organisations, faith leaders and public services came together in the face of adversity.

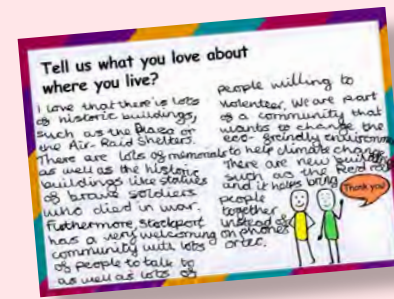
We have seen amazing outpouring of community spirit, creativity and collaboration:

- We saw communities rally together
- We saw support for local businesses and charities
- We rediscovered our local area by cycling and walking
- We have used the opportunity to embrace digital technology
- We worked together and faced the challenges head on

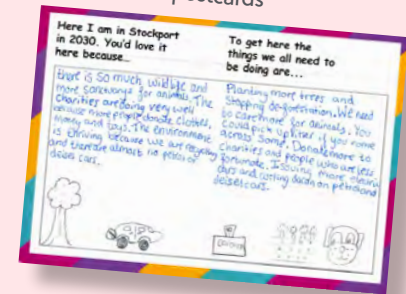
We have come together as One and we want to stay together, to continue to collaborate together, building a hopeful and ambitious future for everyone to enjoy and embrace.

Shaping OUR PLAN

Our One Stockport plan is for everyone, so it is important to us that we reflect the views of people from across the whole Borough of Stockport when shaping it.



Engagement postcards

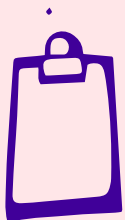


Throughout 2020 we spent time speaking and listening to people, understanding their thoughts, concerns, experiences and aspirations for Stockport in 2030.

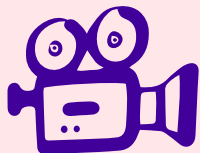
In total, we heard from over 3,800 people who either lived or worked in Stockport, this also included 1,000 children and young people¹.

As Covid-19 reached our communities, we had to adapt our approach, switching to online facilities and working closely with those organisations who represented the wider community of Stockport, to overcome the adversity brought on by the pandemic. We used a number of different methods to ensure we heard from a wide range of people and experiences across Stockport. This included using online surveys, social media, virtual video booths and most importantly we held forums and facilitated virtual forums, discussions and debates.

It was important to us that we captured the diversity and inclusivity of Stockport. Which is why we spoke to people of different ages and experiences.



ONLINE SURVEYS



VIDEO BOOTH



WORKSHOPS



PARTNERSHIP FORUMS



UNDERPINNED BY ONGOING CONVERSATIONS

We worked alongside our Voluntary, Community and Faith Sector organisations and mutual aid groups that have formed as a result of Covid-19 to ensure we captured a diverse and breadth of experiences. This included care leavers, veterans, carers, members of the LGBTQ+ community, faith groups, disabled people and parents and carers of children and young adults with SEND (special educational needs and disabilities), older and younger people's groups and representatives of ethnically diverse communities.

The voice of our businesses was important to us as well. The Economic Alliance and Economic Resilience forum provided an opportunity for local businesses to feedback their thoughts and views.

Finally, we also worked in collaboration with public services from across the Borough. With specific input from: Stockport Council, including elected members, NHS, police, fire service, school and college leaders as well as wider housing providers, care homes and home care providers.

Being able to collaborate with the many different communities, organisations and partners across Stockport has allowed us to speak to and listen to as many different voices as possible to help shape and create our vision for Stockport 2030. This engagement doesn't stop here, in line with our shared values it is important that we continue to collaborate together and seek to hear from different voices, experiences and perspective through a range of engagement approaches, as we move forward into delivery of the ambitious priorities within our shared plan.



WHAT DO YOU LOVE ABOUT WHERE YOU LIVE?



WHAT ARE STOCKPORT'S PRIORITIES FOR THE FUTURE?



What WE HEARD

It is clear that everyone is proud of their local area and we all share the same desire to shape the future of Stockport. Whether that's being an active member of your local community, shopping locally to support our businesses or taking an active role in a voluntary or charitable organisation – it's clear we all want to be involved.

YOU TOLD US...

Equality and inclusion are at the heart of our communities and they are an important indicator of how we can work together in the future, setting out clear aspirations for tackling inequalities across the Borough

Communities care for the environment and want to proactively address the causes and impacts of climate change

We are getting out more and exploring local areas, using numerous walkways and cycle paths across Stockport - helping to improve fitness and mental wellbeing in the process

About the importance of inclusive employment opportunities which enabled local people and businesses to continue to grow, flourish and thrive in Stockport

You were concerned about the economic impacts Covid-19 would have on our local communities; however, you don't want us to lose sight of our ambitions around regeneration and economic growth

You support a shared vision and strategy for One Stockport but want to celebrate the diverse and unique communities which make up the wider Stockport Borough, addressing the experiences and priorities that are important to them

People and communities continue to be impacted by Covid-19, and the concern is how we recover and move forward, tackling health, employment and wellbeing inequalities

2020 has brought us closer together through digital technology. Moving forward people want to remain connected and embrace the advantages of digitalisation, such as shopping online, online banking and keeping in contact with friends and family

You felt that health and wellbeing was important and access to health services was the most important thing for the future. Mental Health and wellbeing was a particular concern for our young people

We have so much TO BE PROUD OF

In the five years since we published our 'Investing in Stockport' Borough Plan, we have seen huge changes at a regional, national and international level.



Our communities, businesses and local public services working together have achieved so much in a few short years. Here are just a few of our achievements:

- Stockport Town Centre is being transformed with award winning commercial developments at Stockport Exchange and the leisure complex at Redrock. New life has also been breathed into Stockport's historic Marketplace and Underbanks
- These bold ambitions have continued, with the establishment of the Mayoral Development Corporation, which is focussed on regenerating our Town Centre West as well as the new and exciting Transport Interchange which will be ready to accommodate the Metrolink and will also see the redevelopment of Mersey Square
- DigiKnow, our award-winning Digital Inclusion Alliance, which encompasses local community organisations, businesses and the council, has reached over **9,000 people** to build digital confidence and skills²
- Health, care and education services have been brought together to create a **joined up approach** to services for children, young people and families, called **Stockport Family**³
- Using an approach called restorative practice, Stockport Family teams focus on the whole person or family rather than just one service
- Over **49,000 people** have volunteered their time⁴, contributing over **114,000 hours**, and adding the equivalent of **£103.4 million** to our economy



Pure Innovations

- We promoted our healthier communities' initiatives, which maintained healthy life expectancy at a higher level than the regional and national averages
- The Council, health services, VCFSE sector and local residents have committed to an Ageing Well Strategy creating five Age-Friendly neighbourhoods so far, alongside launching a Dementia Strategy and Alliance⁵ and an All Age Living Prospectus⁶
- Stockport pupils continue to achieve consistently high attainment levels across all Key Educational Stages⁷
- A new co-produced strategy for young people with Special Educational Needs and Disabilities (SEND) was launched, helping to drive much-needed improvements for children, young people and families⁸
- Through the Safer Stockport Partnership, crime and anti-social behaviour was reduced. Helping to make Stockport one of the safest places to live in Greater Manchester.⁹

One of the most significant collaborations achieved across Stockport was our communities rising to the challenges of Covid-19. By working together we demonstrated the power we have to provide vital support when it is needed most.



The opportunities and challenges **THAT SHAPE OUR VISION**

In 2020 we have had to adapt due to Covid-19. Looking forward we imagine the world in 2030 will be a completely different place.

We want to embrace the opportunities to work together, making the most of our partnership relationships across Greater Manchester, to make the positive changes to shape and create our ambitions for 2030 and One Stockport, as well as addressing the challenges we know the pandemic has presented.

From listening to what you have told us and combined with the data we have gathered, we are able to understand those trends locally, nationally and globally which will have an impact on us, shaping how we live and work in the future.

Here's what we already know about Stockport¹⁰:

- Our population is changing, we have over **290,000 residents** which will grow by over **1,000 people** per year¹¹. We are seeing the ethnic diversity of our population changing. The percentage of people identifying as being from ethnically diverse backgrounds in the census **increased from 4.3% in 2001 to 7.9% in 2011**. In the School Census, the percentage of young people from ethnically diverse backgrounds in 2011 was 10.1% which has increased to 19.6% in 2021
 - We also have an ageing population, with higher than national and regional averages. Projections show that nearly a third of our residents will be aged 65 or above in 2030¹²
 - Our schools produce **higher than average educational outcomes** across the Borough, compared with similar schools in other parts of Greater Manchester¹³. However, for some children in more vulnerable groups, outcomes have been lower than their peers across the country
 - **90% of residents** feel safe here – a much higher average than other Greater Manchester areas¹⁴
 - On average Stockport residents have **good health outcomes and life expectancy** which is improving year on year. However, not everyone experiences good health, and in some communities life expectancy and healthy life expectancy are not improving as much as they should¹⁵
 - We have ambitious regeneration and infrastructure plans for our town centre and our eight vibrant district centres. Stockport is the **best-connected** town centre in the north of England, with an additional **14 new walking and cycle routes** being created by 2030¹⁶
- However we also know that some parts of our Borough are harder to get to than others and that it can be easier to travel into Manchester or Sheffield than to travel from one side of our borough to another¹⁷

- Our communities are **vibrant, diverse and caring** with **1,461 Voluntary, Community, Faith and Social Enterprise organisations** operating across the Borough. We have **49,100 volunteers** (and), with **31 mutual aid networks** set up since March 2020¹⁸
- Our economy is one of the **fastest economies in the north-west**. Stockport is in the **UK top 20** for productivity growth¹⁹ and we have over **13,200 vibrant businesses**, with the Borough being the place for digital or creative roles
- Our **digital and new technologies are continuing to transform lives**, with automation, analytics, smart technology and assisted living changing the way we live, work and play
- Devolution continues to shape the future of Greater Manchester. We continue to influence the wider sub-region whilst ensuring Stockport **make the most of the opportunities brought by devolution** for local communities and businesses

There are long-standing inequalities in the Borough. We are the **eighth most polarised Borough in England²⁰**, with our deprived areas having **lower than average** education, health and employment outcomes, leading to **significant inequalities** which needs addressing. This is one of the biggest challenges facing our Borough now and for the future, including:

- Increasing rates of unemployment due to the impact of the pandemic on key sectors such as hospitality and retail**
- Differences in life expectancy across the Borough with males in the least deprived areas expected to live 8.8 years longer, and females 8.5 years longer than those in the most deprived areas**
- Unemployment amongst 16-24 year olds is set to increase from around 5% to 11% in 2021, with fewer school leavers in employment, education or training**
- Impacts of automation and digitisation which will impact some areas of industry and employment more than others**

Climate change is a global emergency, and we are aiming to be carbon neutral by 2038²¹. We are entering a decisive decade where radical change is needed. Locally we are experiencing increased risks of flooding, brought on by the effects of climate change. We will need action at every level, from national governments right down to local communities

Covid-19 has exacerbated existing inequalities. Universal credit claims doubled across Stockport between November 2019 and November 2020²². We have also seen the increase in the rates of poor wellbeing amongst our communities during the pandemic, compared with that pre-pandemic. As we look to the future, inequalities needs to be addressed holistically, looking at employment, housing, equalities, education, skills and financial inclusion²³

As well as the challenges brought by Covid-19, we have also experienced positive changes too²⁴:

- 43%** of people feel more connected with their local community
- 48%** of residents shop locally and are using local businesses more often
- 45%** now use our local green spaces and parks much more than before
- Our internet usage has doubled with more people now working from home and using the internet for their everyday tasks such as **shopping, paying bills and staying in touch with family and friends**

Our challenges are big. Addressing inequality in our communities will need to run through the Plan. We have so many strengths we can build on as the world around us continues to change. Working together we can make sure that Stockport is at the forefront of those changes to lead the way and achieve our vision for 2030 for all in our communities.

SECTION TWO



Local artist Chyna Bing Mason AKA That Doodle Girl

- 15 **Our vision**
 - 16 **Many places coming together to be stronger as one**
 - 18 **Our values**
 - 19 **Delivering One Stockport**
 - 21 **One heart**
 - A caring and growing Stockport
 - A healthy and happy Stockport
 - A strong and supportive Stockport
 - 34 **One home**
 - A fair and inclusive Stockport
 - A flourishing and creative Stockport
 - A climate friendly Stockport
 - 47 **One future**
 - An enterprising and thriving Stockport
 - A skilled and confident Stockport
 - A radically digital Stockport
- Notes**

One Stockport OUR VISION



We imagine Stockport in 2030 as a place...

...of excitement, creativity and opportunity...

...internationally recognised centre of enterprise and innovation...

...where no matter where you grow up or live that you can achieve brilliant things...

...for learning and developing new skills, and where you can enjoy fulfilling work locally, at all stages in your life...

...where people feel part of a community which supports them to feel valued, loved, happy and healthy...

...where everyone supports local businesses and looks after the environment...

...where we celebrate our differences and work together, as One, to face whatever the future faces.

Our plan is about action. About the things we can do together to deliver our vision.

Many places
coming together to be
**STRONGER
AS ONE**

Stockport is made up of different places, different faces and different spaces – it's what makes us great.

We are proud of our unique villages, district and local centres and open green spaces. We embrace the diversity our local places bring and celebrate their history and heritage.

What unites us is our core belief in wanting what's best for our families, friends, neighbours and communities.

Lock no 16 – Top Lock





ONE STOCKPORT IS...

One Borough...

...A variety of communities and local centres...

...Many naturally forming geographies...

...Proudly local – a community of communities

Our VALUES

Through our conversations, we heard that our vision for One Stockport was not just about working together on important things, but how we work together.

2020 has taught us so much and has enabled us to build new relationships, develop ourselves and work with those around us to overcome challenges – giving us hope for the future of Stockport.

We want to build on this.

This is why it is important that our vision for Stockport 2030 also includes commitments about how we will work together:



WE ARE INCLUSIVE

We believe our differences and unique experiences need to be celebrated. We proactively address inequality and hold ourselves accountable for everyone feeling included and valued.

WE ARE AMBITIOUS

We believe in Stockport, our people and the places that make up our Borough. We are continuously challenging ourselves to be the best we can be for Stockport.

WE ARE COLLABORATIVE

We believe in working together openly and honestly. We support each other and always work together for the benefit of Stockport.

We will uphold these values as citizens, employers and partners, championing them with our neighbours, our colleagues and our local communities.

Delivering **ONE STOCKPORT**

For our plan to be successful we need to focus on things we can and should do together. We have identified nine shared priorities that we will focus on together for Stockport. These priorities are holistic, tangible and action focussed.

TOGETHER WE WILL FOCUS ON:



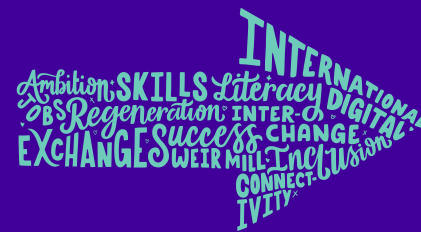
ONE HEART

Because at the heart of Stockport are its people and the communities in which they live



ONE HOME

Because we believe that Stockport is a great place to live, where no one should be left behind



ONE FUTURE

Because we can grow, create and deliver a thriving future for Stockport

This is a ten-year plan however we know a lot can happen that time. The plan will therefore be reviewed regularly and updated where needed.



ONE HEART

At the heart of Stockport are its people and the communities in which they live.

- 1 **A caring and growing Stockport**
Stockport is a great place to grow where children have the best start in life
- 2 **A healthy and happy Stockport**
People live the best lives they can - happy, healthy and independently
- 3 **A strong and supportive Stockport**
Confident and empowered communities working together to make a difference



ONE HOME

Stockport is a great place to live, where no one is left behind.

- 1 **A fair and inclusive Stockport**
A borough for everyone - diversity and inclusion is celebrated and everyone has equity of opportunity
- 2 **A flourishing and creative Stockport**
Stockport is an exciting place to live, where people are active and celebrate the culture
- 3 **A climate friendly Stockport**
Stockport is a responsible and sustainable borough



ONE FUTURE

Growing, creating and delivering a thriving future for Stockport.

- 1 **An enterprising and thriving Stockport**
A thriving economy which works for everyone
- 2 **A skilled and confident Stockport**
Everyone has the opportunities and skills to successfully achieve their ambitions
- 3 **A radically digital Stockport**
A digitally inclusive and dynamic borough

ONE HEART

At the heart of Stockport are its people and the communities in which they live.



- 1 A caring and growing Stockport**
Stockport is a great place to grow where children have the best start in life
- 2 A healthy and happy Stockport**
People live the best lives they can - happy, healthy and independently
- 3 A strong and supportive Stockport**
Confident and empowered communities working together to make a difference

1 A caring and growing Stockport

OUR AMBITION:

Stockport is a great place to grow where children have the best start in life

Our children and young people are our future and Stockport is a great place for them to grow up.

We want all children and young people to have the best start in life, be happy, safe and be able to build healthy relationships which will enable them to thrive.

Our early years settings, schools and colleges will give them the foundations they need to prepare them for adulthood and achieve their aspirations. We want our families to feel supported, empowered and connected to their community. As children move through the phases of education, we want them to develop with strong skills and aspirations both for themselves and for the benefit of wider society. The contribution of great education in Stockport will enable this and sits at the heart of any development for children and young people.

The pandemic has significantly impacted our children, young people and their families, whether that's through the pressures of remote learning, the cancellation of exams, missing out on going to university, not being able to attend local baby groups or simply being unable to spend time with friends and family. Our families, early years settings, schools, colleges and public services have come together to support each other and continue to support our children and young people. Whilst we continue to understand the longer-term impact of Covid-19, the passion, skills, and collaboration across families, education and all partners will enable us to remain ambitious for the fantastic things that children and young people can and will go on to achieve.

Colouring in the famous Stockport Frogs



HOW WE ARE ALREADY DEMONSTRATING OUR CARING AND GROWING AMBITIONS

Stockport College Community Partnership

"A college should always be a fulfilling environment, where its learners can thrive and at Stockport College we're really proud of the work we do as part of our Community Partnership project to support our students' learning – no matter what their academic ability may be. We've teamed up with a whole range of different services, from the Police, Stockport Council and the Proud Trust through to Disability Stockport and the Samaritans to support our students' challenges and in addition offer creative opportunities for work experience as well as complementary educational activities."

Stockport College

Team Around School

"Teams Around School (TAS) and Teams Around the Early Years (TAEY) are here to help support families across the borough who need access to additional educational support when it's needed. We work in partnership with families and support services, such as school age plus workers, school nurses, start well teams or linked social workers to provide the right support and guidance needed for a child and their family, helping them adapt and cope with various situations."

WHAT WE HEARD

- Most children and young people in Stockport are happy, healthy and do well at nursery, school and college. However, inequalities exist with children living in poverty in Stockport. We know these children are less likely to be school ready and so do less well in education, have poorer health and life chances than children in other Boroughs
- The provision of support for children with special educational needs and disabilities (SEND) needs to be consistent across the borough. There is a multi-agency improvement plan in place to oversee the change²⁵
- Children, young people, families, carers and practitioners have developed a shared outcomes framework. They have told us they want children and young people to be able to say
 - **I feel safe**
 - **I feel part of my community**
 - **My voice is heard**
 - **I enjoy good health and wellbeing**
 - **I am happy and have people I can trust**
 - **I am confident and able to reach my goals**
 - **The people who love and care for me are enabled to do this**
- Our children and young people are passionate and proud of their local communities and neighbourhoods. They want to see a hopeful future where climate change, equalities and employment opportunities are important
- Young people spoke passionately about the importance of understanding their own mental health and emotional wellbeing. Prior to 2020 an estimated 6,100 young people aged 5-19 in Stockport had challenges with mental wellbeing, and it is likely that the pandemic will have increased this number
- Young people, employers, colleges and schools all spoke about opportunities to work together to inspire young people and provide employment and training.

PEOPLE TOLD US

"People with special educational needs are celebrated and feel safe"

Laura, 9, Primary School Pupil

"I've always known I love learning and education, it's where I thrive. Over the years I have needed a little help and support because of my Cerebral palsy, although I have never let it stand in my way. When I left sixth form I have passed all of my A levels and achieved three A's in maths, physics and AS Further maths, as well as B in computer science. I am now studying for a degree in maths at Manchester University – don't let anyone tell you hard work doesn't pay off!"

James, aged 19

"Engage with young people, face to face, and ask what young people want"

Rachel, College Student

"More opportunities for young people in various types of workplaces"

Stockport Youth Engagement group member, January 2019

"We want our voice to be heard because it is very important that people need to hear what children need to say"

Kylie, 15, March 2020

THE ACTION WE WILL TAKE

- 1 Support children to **start well and increase school readiness** through the delivery of our joint strategy²⁶, embedding the shared outcomes framework²⁷ and the jointly designed coproduction charter²⁸
- 2 Work together with early years settings, schools and colleges to identify Borough wide common priorities across the education sector which will **inform plans which will lead to improve attendance and attainment for all**
- 3 Further develop **inclusive educational settings** through our SEND and Inclusion Plan
- 4 **Deliver our SEND and Joint Commissioning Strategy** to ensure children and young adults with SEND have the best start in life, have equality of opportunity and the opportunity to improve the **emotional wellbeing** of all children
- 5 We will energetically pursue a fair share of national funds to **develop our school estates** so that we have buildings which inspire and support a 21st century vision for education where world class facilities promote world class achievement and ambition amongst our learners of all ages. We will ensure enough 'good or improving' local and inclusive school places that our children and young people want to go to. Further develop **neighbourhood partnerships** to coordinate support for families and communities, building on the Stockport Family approach
- 6 **Enhance our early help offer** – ensuring all children, young people and families receive the help they need, when they need it and before things escalate
- 7 Equip **children in care and care leavers** with the skills needed to live a fulfilling, successful and rewarding life through delivery of the Corporate Parenting Strategy
- 8 Help young people to **be resilient and prepare for adulthood** – using the opportunities brought by everyone working together as One Stockport to work with schools, colleges and local businesses to inspire our future generation. We will launch our Youth Guarantee for those aged 16-30.



HOW WE WILL MEASURE SUCCESS

- Improved educational attendance and attainment for all children and young people in Stockport, including improving outcomes for specific groups compared to their peers across the country:
 - Children in need (CIN);**
 - those in receipt of free school meals (FSM); and,**
 - those with special educational needs or disabilities (SEND)**
- Improved quality of early years, primary and secondary school settings, by increasing the number of settings rated 'Good' or 'Outstanding' by Ofsted
- Increasing the number of children who are 'school ready'
- Increasing the number of young people in academic Years 12 and 13 (16-18) who are in education or work-based training, including care leavers, those in receipt of FSM and with SEND
- Improved health outcomes for children and young people
- Ensure more young people are 'work ready' and sufficiently equipped to do their job.

This priority will be delivered through our Children and Young People's Strategy²⁹

2 A healthy and happy Stockport

OUR AMBITION:

People live the best lives they can - happy, healthy and independently

Our health and wellbeing have never been more important to us.

Covid-19 has had a significant impact on so many people's lives and touched so many communities across Stockport. It has increased existing inequalities in health and wellbeing and the pressures it has put on health services could further increase the gap by delaying access to routine diagnosis and treatment.

At the same time, we have seen compassion and kindness across the Borough as people have reached out to help friends, colleagues, neighbours and their community. More than ever before, we are proud of our NHS, of our social care teams and of local carers – the heroes who look after us when we need them and who make us proud to be part of One Stockport. It is reassuring to know that many of the bonds formed in the toughest of times are still there to help us through the better times.

We have an opportunity to recover stronger and make the most of wider opportunities to improve health and wellbeing through being active, connected, having access to good jobs, and living standards.

Thank you Key Workers



HOW WE ARE ALREADY DEMONSTRATING OUR HEALTHY AND HAPPY AMBITIONS

Bredbury barber offers mental health support to their clients

"I have had struggles myself with my own Mental Health and as a barber I spend a lot of time chatting to people as they are in my chair. I had heard of an initiative called the 'Lions Barber Collective' on social media and wanted to know more about it. It was set up by Tom Chapman in Torquay in 2015 and is a collection of mental health awareness trained barbers, helping to break down some of the barriers surrounding mental health awareness.

Did you know that suicide is the biggest killer in young men in the UK? – neither did I until I got involved. I thought that if I could help just one of my customers, it would be worth it. I love the banter I have with my clients and I'm in a privileged position of being seen as a confidant and a pair of ears willing to listen."

Darren Blade barbershop in Bredbury

Adult Social Care Operating Model

"Providing care and support to people with complex care needs is never an easy challenge to tackle. Since we launched our Adults Operating Model we now have a solution which allows us to offer personalised, joined up support to an individual in their own home. We work in a strengths based way, placing a focus on what the individual can do rather

than what they cannot, this helps them to maximise independence in their own environment. We work in a multi disciplinary approach with partners in health and the third sector, by doing this we provide better care to individuals so they can rest and recuperate in their own home, whether their need is primarily social care, health or both."

Integrated Neighbourhood Team

WHAT WE HEARD

- Health in Stockport is generally good with a high average life expectancy, but a quarter of people surveyed were extremely or very worried of the impact of Covid-19 on their health and wellbeing and on existing health inequalities
- Access to good quality health services came out as the top priority for the future in the online survey with nearly half, (49%) of people telling us it's one of the most important things to them
- Mental health is a priority across all ages. Rates of poor emotional wellbeing have almost doubled from pre-pandemic levels
- Social Isolation was a major issue for older residents which has become significantly worse in the pandemic and threatens health and wellbeing
- Loneliness is an issue for many across the ages and needs to be recognised and supported
- Strong support for holistic approaches - support and services that treat each person with respect and as an individual – that avoids labels and working in isolation
- Wider factors like employment, education, housing, leisure and green spaces all have an impact on health and vice versa
- We have an above average ageing population which brings many benefits and some challenges and it is important to recognise both
- We celebrate the ways older residents actively contribute to our communities: volunteering, providing informal care and being rich sources of understanding and experience
- The cessation of volunteering activities, by and for older people, during the Covid-19 pandemic is likely to have significant long-term health and wellbeing effects
- As people live longer lives with more complex health and care needs, we need to work together across communities to support people better and earlier to continue to live as independently as possible
- While healthy life expectancy is increasing, it is not increasing as much as life expectancy, meaning that people are spending more years in fair and poor health. Supporting people to live well with and empowering them to take charge of their own health remains a key ambition³⁰
- Overall, 44% of the people registered with Stockport GPs have one or more long term health condition, and this increases with age, from 3% in the 0-4 age band, to 92% in those aged 85 and over³¹
- Some people and communities require additional support such as families with a child with SEND, care leavers and older people

PEOPLE TOLD US

"I want everyone to be happy and healthy. Good health isn't just about good services it is also about employment, education, friendship and enjoying the outdoors"
Claire, Romiley, age 43

"Looking after our mental health is more important than ever"
Millie, Stockport College, age 17

"The pandemic highlighted the vulnerabilities that can come with health conditions and age. However, it also shone a light on the resilience and contribution older adults make to our communities, continuing with work, volunteering and caring responsibilities. Some returned to work in key front line roles while others found new ways of staying involved and providing support"
Sue Alting, Chair of the Age UK Stockport Board of Trustees

"For an aging population, I think having an accessible and good quality health care network is key - this ties in closely with a good quality social care and community network. People need to feel safe and secure and this is dependent on health and connectivity. It's imperative this is supported by being able to get around and have access to a solid and affordable public transport system"
Janet, Offerton, age 68

THE ACTION WE WILL TAKE

- 1 Continue to provide safe, high quality health and care services through **new system leadership arrangements and a joint improvement plan**
- 2 Radical focus on **early help and prevention** through co-designing a new model, recommissioning key services for 2022 and making the most of digital technology. Including the network of support from friends, family members and the many local community groups and organisations that provide vital care and support within the home
- 3 Improve mental health and wellbeing through development of a **joint all age mental health and wellbeing strategy** working with communities, schools and businesses
- 4 Work together to **undertake targeted action on inequalities** through a new population health plan and neighbourhood model that recognises wider factors such as housing, employment and social connectedness
- 5 Build and retain a **resilient, valued and inclusive health and care workforce that promotes homegrown talent** to create training and employment opportunities for local people and carers through a joint workforce plan
- 6 Continue our work to be an **age friendly Borough** through our aging well strategy that proactively supports people to age well and remain healthy, active and enjoy a good quality of life
- 7 Develop the way we deliver Adult Social Care and Health to help the people of Stockport to **live their best lives possible**. We will continue to develop and embed our operating models which **promote prevention, reablement and a Home First ethos**.



Keeping happy and healthy at all ages

HOW WE WILL MEASURE SUCCESS

- Maintain an increase in healthy life expectancy across the Borough, whilst also reducing the widening gap between our communities
- Early intervention and prevention keeps people independent for as long as possible and reduces admittance and re-admittance to hospital, residential or nursing care
- Improvement in the levels of happiness, mental health and emotional wellbeing and increase the number of active people across the Borough
- Better access to mental health treatment and support (via CAMHS and Community Mental Health Services) for children and young people
- Improvement in the quality and timeliness of care and support needed
- Financially sustainable and resilient health and care provision.

This priority will be delivered through our ONE Health and Care Plan



3 A strong and supportive Stockport

OUR AMBITION:

Confident and empowered communities working together to make a difference.

Stockport's communities are the beating heart of our Borough and what makes Stockport so special. We are a community of communities, with unique districts and villages that share a passion for making things better for others and their local neighbourhoods. Our number of social enterprises are leading the way in driving community entrepreneurialism.

In the face of a global pandemic we have seen an inspirational and unprecedented coming together of communities to support each other and the most vulnerable. A movement of mutual aid emerged, organising support and keeping in touch with those far from friends and family. People wanted to help, with over 600 new volunteers in the first few months of 2020 alone, alongside long-term volunteers. Community, Voluntary and Faith groups and leaders have worked together with public services in new ways and have an ambition to stay together to shape our future.

We have seen creativity and innovation from the Heaton's zoo to Stockport Spiderman – local people have come up with innovative ideas to raise spirits and promote togetherness.

Confident and empowered communities don't happen in isolation. It requires the nurturing of relationships, investment in community innovation, opportunities for connecting across communities and redesigning how public services work to build much stronger neighbourhood connections. Put simply, it requires a bold rebalancing of power. Working in partnership with communities at a neighbourhood level is a big part of this – designing together ways to keep people independent and connected in their community.

We have a unique opportunity to build a legacy of collaboration, community power and volunteering which will drive our ambition for a great Stockport in 2030.

Heaton's Zoo



HOW WE ARE ALREADY DEMONSTRATING OUR STRONG AND SUPPORTIVE AMBITIONS

Community Covid response

"At the Cheadle Muslim Association (CMA) we are a central pillar of the community and work really closely with local schools. So far we have worked with over 4,000 children and 29 schools from across the borough, welcoming them into our community centre for shared activities. When the pandemic hit last year, we knew we had to do something to help those people in our local community who were vulnerable or needed support at such a troubling time. Which is why we launched our food bank initiative, and within a couple of weeks we were providing food and support to over 30 local families. It has been such a success, that we are considering other ways in which we can support more people through these difficult times."

Volunteering

"Being a volunteer also helps me engage better with people. As part of my role with the Stockport Samaritans I spend a lot of time listening to people and helping them to talk about their concerns or worries. I think being a slightly older volunteer really helps me understand where they are coming from and I can really relate to them, especially when they talk about being isolated and alone – we all need someone to talk to don't we?"

Chrissie, Stockport Samaritans

WHAT WE HEARD

- Kind and connected communities came through as a key theme throughout our engagement. The Voluntary, Community, Faith and Social Enterprise sector, Businesses, Young people, Older people and the Parents and Carers of children with SEND group all mentioned the importance of this
- Within the Covid-19 impact survey **43%** of people said they felt more connected to their local community during lockdown
- The One Stockport priorities survey showed that one of the top three best things about living in Stockport is feeling part of a community where people support one another
- People and communities have, and continue to be, impacted by Covid-19, with concerns about the future emerging strongly in discussions and surveys. Conversations focussed on the importance of mutual support, collaborating to support those in need and maintaining new relationships
- We have a vibrant and diverse Voluntary, Community, Faith and Social Enterprise Sector with over **1,460** organisations across the Borough
- Many examples were given of the power of public services, the Voluntary, Community, Faith and Social Enterprise sector and businesses coming together in neighbourhoods to tackle their challenges
- We need to focus on building resilience of people and communities so that they are better able to be independent, support each other and thrive
- There were also examples of where communities were better placed than public services to make a positive difference and reach those people who needed it
- 80% of respondents to the Greater Manchester resident police and crime survey said that people look out for each other in their local area with 77% said that they have a sense of belonging and 82% said they are proud of their local area.³²

PEOPLE TOLD US

"By giving something away, just a little bit people can actually join in and be part of the community. We have all sorts of religious and nonreligious people coming and that's what I like about Stockport, its inclusion in action"

Arshad, Cheadle Mosque

"I love the sense of community from where I'm from because everybody works together"

Lucy, Youth Participation Member

"Stockport feels like a place where we are all in this together with one shared objective meeting community and individual needs. We need to maintain the impetus of community groups and this sense of togetherness"

Louise Parrot-Bates, Pure Innovations

"I love that there is lots of historic buildings, such as the Plaza, Air-Raid Shelters and memorials. I like the historic buildings like the statues of brave soldiers. Stockport has a very welcoming community with lots of people to talk to as well as lots of people willing to volunteer"

Jamie, aged 9, Hursthead Junior

THE ACTION WE WILL TAKE

- 1 Work together with local people and communities** to unblock barriers to action and explore opportunities to work differently to solve their challenges themselves
- 2 Invest in innovative ideas developed by our Communities** through public sector grants and leveraging external funding opportunities
- Co-design a **shared strategy for our Voluntary, Community, Faith and Social Enterprise Sector** – underpinned by cross sector networks, sustainable funding approaches and access to wider support
- Build upon the existing Voluntary, Community, Faith and Social Enterprise forums to **co-design an inclusive Voluntary, Community, Faith and Social Enterprise assembly** which celebrates and enables connectivity across communities
- Create a **legacy of volunteering through the development of a Stockport volunteering hub**. Building on the outpouring of support and mutual aid movement during Covid-19
- Develop our **ONE neighbourhood partnership model** to coordinate support for people and local places, empower people, keep people independent and connected in their community. This includes aligning with the co-design and recommissioning of our new early help and prevention model
- 7 Refresh our Safer Stockport strategy³³** – ensuring our neighbourhoods feel safe and welcoming.



Friendly Fridays - Cheshire Health

HOW WE WILL MEASURE SUCCESS

- Increased levels of pride and satisfaction
- Increased and sustained levels of volunteering
- More people stay independent and well, reducing demand on public services
- Number of people reporting that they feel safe and levels of crime and Anti-Social Behaviour
- Joint teams working together in all of our neighbourhoods
- Vibrant and resilient voluntary, community, faith and social enterprise Sector.

This will be delivered through a Neighbourhoods Strategy for the Borough (this will be developed in partnership during 2021) alongside our Safer Stockport Strategy (this will be refreshed in partnership during 2021)



ONE HOME

Stockport is a great place to live, where no one is left behind.

SA FE CULTURE HOME
Active INCLUSION
EQUALITY Local
Age friendly Centre
EDGELEY PARK SPORTS
Green CLIMATE
PARKS CHANGE
Creativity PUBLIC
NEIGHBOURHOOD TRAN-
District Centre SPORT

- 1 A fair and inclusive Stockport**
A Borough for everyone - diversity and inclusion is celebrated and everyone has equity of opportunity
- 2 A flourishing and creative Stockport**
Stockport is an exciting place to live, where people are active and celebrate the culture
- 3 A climate friendly Stockport**
Stockport is a responsible and sustainable borough

1 A fair and inclusive Stockport

OUR AMBITION:

A Borough for everyone - diversity and inclusion is celebrated and everyone has equity of opportunity

In Stockport we know that not all our residents and families have the same opportunities. We are one of the most polarised Boroughs in the country and inequality affects people's health, education outcomes and aspirations.

We have developed this plan during a historic time in our lives. Whilst the global Covid-19 pandemic has been a defining feature of this period – it has also been a momentous year for black communities worldwide. The Black Lives Matter movement has brought to the forefront the continuing work needed to address racism and inequality in our organisations, communities and ways that we work together.

Nationally we have seen Covid-19 exacerbate the inequality that exists across our communities. Whether that is the differential health impacts of Covid-19, home schooling, shielding, furlough, or wider financial resilience and security, we need to be bold in addressing this and focussing on those areas where we can make a difference for all our communities.

Whether it is access to employment opportunities, support to become financially independent or having access to new digital technologies, we need to ensure equality is at the heart of how we do things. How we spend our money and procure services is hugely important – investing in local people, community and voluntary organisations, business and places through embedding social value is a big part of how we can together address inequalities.

We want to celebrate our diversity and make Stockport somewhere we are all proud to live and work. We have heard loud and clear from our communities that fairness and equity are the foundation for us all to achieve success. **Because we only succeed when we can all succeed together, as One.**

Cheadle Mosque



HOW WE ARE ALREADY DEMONSTRATING OUR FAIR AND INCLUSIVE AMBITIONS

NEXUS equality partnership

"We are a local partnership bringing together community groups and public services that have an interest in equality and diversity in practice. We are passionate about equality, tackling disadvantages and discrimination across different communities of identity and experience. During the pandemic we captured and shared insight about the experiences of different equality groups as well as supporting people who be more isolated within their neighbourhood, such as Maya "I felt isolated during the pandemic due to the difficulties I have had in communicating. I have relied on the support of my children and friends to help me receive information about the pandemic but working with NEXUS helped me feel more connected to my community. The doorstep welfare checks from NEXUS have also been really helpful and have helped me gain confidence. Two of my children have since been inspired to start volunteering!"

Stockport County

"We recognised some of our fans and the wider community were struggling with financial hardships, so we decided we should launch our 'Food for Christmas' campaign, which saw the club pledge £100,000 in support. Through various fundraising initiatives around the club, and the local community we managed to add another £108,000 to the pot in the run up to Christmas. We knew we weren't able to reach all of those people in the community we needed to on our own, so we enlisted the help of Sector3 to help us distribute the funds to those who needed it across Stockport.

Sector3 are at the heart of the VCFSE community, who were helping to support many of the families we wanted to reach – so it seemed like a natural partnership to create. One which really demonstrates what is possible when everyone pulls together to support their local community."

WHAT WE HEARD

- Equality, equity and unity came out as a recurring (and strong) theme through all our conversations
- Stockport is the 8th most unequal Borough in the country and inequality affects all outcomes including health, education, employment and wellbeing
- Since October 2019, Universal Credit claimants have doubled from 4,725 to 10,685. Under 25's now make-up a third of all new claimants

- The impact and momentum of the Black Lives Matter movement is inspiring, and we want to do more as a Borough to tackle racism and celebrate diversity
- The complex intersectionality of different identities and experiences was also identified as an important determining factor in outcomes for individuals and families
- Businesses, the Voluntary, Community, Faith and Social Enterprise Sector, Faith Leaders and Public Services were united in the need for more connection and inclusion of groups including LGBTQ+, ethnically diverse communities and disabled people and young adults
- Our young people said we should be united and care for each other and our older people suggested we should encourage more intergenerational relationships
- 80% of respondents to the Greater Manchester resident police and crime survey said that people from different backgrounds get on well
- It is very important to that all communities are valued and are celebrated as part of the rich tapestry of Stockport in their own right.

PEOPLE TOLD US

"Information is knowledge,
knowledge is empowerment,
empowerment is equality"
Mary Edwards, Stockport Advocacy

"I would like to see
Stockport become a
very open place where
everybody
feels accepted"
Jamil, 16, college student

"If we are going to
look at how we move forward
- the right people need to be on board - service provision
needs to connect to and reflect the community it serves"
Aba Graham, Chair of the Race Equality Partnership

"Working with citizens to
develop ways to be a more cohesive,
equal and understanding society
and place to live and work"
Ashley, Stockport Pride

THE ACTION WE WILL TAKE

- 1 Work across anchor organisations** in Stockport to tackle inequalities and promote inclusion with named senior leadership responsibility
- Capture the lived experiences of communities, particularly those where there is evidence of inequality, to inform a co-developed set of **cross Borough equality objectives** with a robust action plan to address discrimination and inequality across Stockport
- 3 Review and co-design a joined up financial inclusion support offer.** Creating a clear and holistic route for people to be financially resilient and independent
- 4 Introduce a new Food Network** – building closer relationships across food provision for those experiencing food poverty across Stockport
- Further **develop equality and diversity networks** and link them into decision makers and equality impact considerations
- Work together to look at the goods and services we buy to **keep the Stockport £ in Stockport** and explore opportunities for increased social value, inclusion and corporate social responsibility
- Promote and support **inclusive employment** practice to increase diversity, inclusivity and opportunities in Stockport's many workforces, sharing good practice and embedding a greater understanding of the lived experience of our local communities (such as: racism, ableism, homophobia, transphobia, islamophobia and sexism) into training and development.
- 8 Invest in where better lifelong learning, skills and training are needed to reverse long-term unemployment** and the impact it can have on wider social issues.



International Women's Day

HOW WE WILL MEASURE SUCCESS

- Improved health, educational and employment outcomes for marginalised groups including those living in deprived neighbourhoods
- Our workforces across all sectors are increasingly reflective of our Borough's demographics, including in leadership roles
- Increased sense of safety and satisfaction with local areas for equality groups
- Improved financial resilience for our most vulnerable citizens
- Increased social investment in Stockport (through embedding social value approaches including: corporate social responsibility, giving, successful grant investments).

This will be delivered through organisational equality and diversity strategies, plans, equality impact assessments and a Tackling Inequalities strategy and outcomes framework (to be developed in partnership during 2021).



2 A flourishing and creative Stockport

OUR AMBITION:

Stockport's neighbourhoods, local and district centres are exciting places to live, where people are active and celebrate culture

Stockport is an exciting place to live. We have diverse neighbourhoods and district centres, wonderful parks and open spaces, a range of sport and leisure opportunities and fascinating heritage and culture. Whether its walks across the Marple Aqueduct, kayaking the Mersey, watching Stockport County play, experiencing performances at Romiley Forum or weekend visits to Reddish Vale. We have it all on our doorstep. We're really spoilt for choice.

We know how important it has been to get out and explore our local areas during the pandemic and many people have rediscovered the benefits of being outdoors. At the same time, we have missed sport, heritage, arts and culture and the positive benefits these have on health and wellbeing.

We all want a place we can call home and safe, affordable, adaptable and decent housing is key to this. We want older people and adults with complex needs to be able to stay independent and connected to their communities and opportunities for younger people to get on the housing ladder.

Our residents have been very clear that they care deeply about Stockport and it is already a great place to live. Flourishing, welcoming and creative neighbourhoods are what make a place a home. We can work together to enhance our local areas, increasing pride and ensuring that everyone benefits from its creativity, outdoor spaces and culture. This means people of all ages and from all parts of the Borough.

Kayaking on the River Mersey



HOW WE ARE ALREADY DEMONSTRATING OUR FLOURISHING AND CREATIVE AMBITIONS

Friends of Woodsmoor Station

"Our Woodsmoor Station Friends group is made up of volunteers from the local area and we give up our time to help maintain and enhance our beautiful Woodsmoor community train station. We've recently worked with Stockport Council and Northern Rail to help rail commuters who arrive at our station find their way to nearby Stepping Hill hospital safely. We encourage them to use public transport wherever possible to help reduce their carbon footprint and to help the hospital manage their already busy hospital parking facilities – it's a win, win for everyone."

Woodsmoor Station Friends Volunteer

All Age Living Campus (St Thomas)

"Our plans to redevelop the old St Thomas' Hospital site in Stockport will include the borough's first 'All Age Living' campus. We have recently published our prospectus on 'All Age Living' and we think this development is the perfect opportunity to help us realise our ambition of designing happy, healthy, fully accessible and adaptable homes which allow people to remain in their own homes and 'Live Well' for longer."

Stockport Council

WHAT WE HEARD

- We have spent more time exploring our local areas. They are important to us and we are passionate about seeing our neighbourhood, local and district centres thrive
- We have unique and interesting heritage which is reflected in the interests within our local neighbourhoods
- Our cultural sector is an important part of who Stockport is – we are a place that makes itself, we'd like to celebrate our creative, heritage and local cultural sectors more
- 15% of residents who responded to the priorities survey told us that affordable housing was one of their top priorities for the future
- We need to have housing that is inclusive, suits people at different stages of their lives and meets different needs - taking advantage of future developments in technology around adaptable housing for all ages
- We firmly believe Age Friendly should relate to all ages and be embedded within how we work together, design local areas and shape services
- We have a strong sporting heritage, from Olympic medallists to our competitive football team right through to our fantastic grassroots sports clubs
- Our residents want to be more active – one third of people are walking more and one quarter are exercising more in the Greater Manchester survey
- Our greenspaces and parks are important and include: over 1,800 hectares of greenspace made up of over 30 parks, 317 hectares of countryside sites including woodlands, 142 play areas, over 50 sporting facilities as well as 14 formal gardens and memorial gardens
- 56% of residents who responded to the priorities survey told us access to parks and greenspaces was one of the best things about Stockport and 50% said these were one of the most important things for the future
- There are over 80 active "Friends of" networks for our parks and heritage buildings.

PEOPLE TOLD US

"One of the best things about Stockport are the heritage buildings that have survived"

Tell us your priorities survey respondent
(Rosie aged 60 from Manor)

"We want to be able to grow older within our communities"

Terri, Older Peoples Forum, September 2020

"Develop local areas to support employment and wellbeing of citizens in doing so will reduce crime and improve health"

Dave, Hazel Grove, Tell us your Priorities Survey

"Inclusion, ambition and collaboration are values that would be at the heart of a creative and cultural programme. Culture and creativity are incredibly important in Stockport now and in the future, helping maintain connections and wellbeing. It's now how we turn these values and this creativity into a reality, into actions that engage and inspire."

Jacqui Wood, ARC

THE ACTION WE WILL TAKE

- 1 Co-creating plans with local communities which enable **vibrant local and district centres**, including:
 - **ensure our community spaces and facilities** such as leisure, heritage attractions, libraries or community centres **are well used, vibrant, accessible to all** and support local community needs
 - **ensure our plans for local community space support the delivery of local aspirations** whether that be leisure facilities, heritage attractions, libraries or community centres
- 2 **Co-create and launch a new Cultural Strategy for the Borough.** Providing opportunities for new nationally exciting creative collaborations as well as local residents and businesses coming together, staying connected and learning new skills. Our strategy will also celebrate Stockport's vibrant past, present and future and will be an ambitious collaboration with local residents, businesses, local artists, performers and creatives
- 3 Continue to explore how existing **and future housing in the Borough** can improve the life quality of our residents both now and in the future – with a focus on all age living and improving life chances for young people
- 4 Develop an **all age living campus** including intergenerational housing and a new intermediate and dementia care facility which will operate through an innovative household model
- 5 Deliver our **homeless strategy.** Ensuring everyone has somewhere safe to sleep and the support they need to get them back on their feet
- 6 Deliver our **active communities' strategy** to encourage everyone to have healthy, physically active lifestyles and enjoy exercise, sport, culture and greenspaces
- 7 Improve the **biodiversity and accessibility of our spaces and centres** and increase the number and range of groups and individuals that benefit from our green spaces

The Jolly Sailor - Davenport



HOW WE WILL MEASURE SUCCESS

- Increased satisfaction with local area
- Increased levels of affordable and appropriate housing
- Increased number of people exercising regularly (including through active transport)
- Improved perceptions of healthy and positive ageing.

This priority will be delivered through our **Cultural Strategy** (to be developed through 2021); **Active Communities Strategy**; **Ageing Well Strategy**³⁴; and individual organisation's plans.



3 A climate friendly Stockport

OUR AMBITION:
A climate friendly and sustainable Borough

Globally, we recognise that climate change poses an unprecedented threat to our society. In many ways this is a decisive decade, where we have the knowledge and the emerging technology to take greater action. Without proactive and concerted effort, the average global temperature is estimated to increase by 1.1 - 5.4 degrees Celsius by 2100. This will result in an increase in droughts, water shortages, the loss of coastal lands and the decline of fresh water supplies – to name just a few.

The pandemic has radically changed behaviour, carbon emissions have fallen dramatically, and air quality has improved. People are travelling less, walking and cycling more and spending more time outdoors. This has the power to improve health and wellbeing as well as the environment.

As a Borough we can build on these positive changes. One thing is clear, solving climate change will take a collective effort. The food we eat, the way we travel and power our homes, the stuff we buy and the way we get rid of it, all affects climate change.

Active travel



HOW WE ARE ALREADY DEMONSTRATING OUR SUSTAINABLE AND RESPONSIBLE AMBITIONS

WalkRide Romiley

"WalkRide Romiley is a local community initiative designed to encourage more people to get walking or out on their bike, rather than use their cars. We find the local area around school time is jam packed full of people on the 'school run', so many cars, we aren't able to move or get anywhere.

We are really lucky in Greater Manchester that we have over £160 million available to improve walking and cycle ways via the Bee Network initiative. Our WalkRide group want to ensure Romiley receives its fair share of the funding to improve its local cycle corridors and reduce the use of cars across the area – for the benefit of everyone."

Kate, aged 40, WalkRide Romiley

Sustainable living in the Heatons – Climate action festival Sept 2020

"When we launched our 'Climate Action' festival in September 2020, we didn't think it was going to be as successful as it was. Our primary objective was to bring people together from across the Heatons to discuss how we could collectively tackle climate change. We held 12 online interactive sessions with specialists in their field which discussed key topics including Reducing, Reusing and Recycling and practical tips to getting out and about on foot or on a bike, rather than using a car. It was great to see that the local community (and others) shared our vision for the Heatons and sustainable living."

Julie and Jackie, Sustainable Living in the Heatons

WHAT WE HEARD

- Responding to climate change has emerged as a top priority for people across the Borough
- Young people are extremely passionate and want to take action. 7,662 young people from Stockport took part in the Make Your Mark ballot in 2019 with over half naming it the biggest priority
- In our Climate Change survey 97% of respondents said the climate was important to them and they are committed to tackling the effects of climate change

- Those who responded to our Climate Change survey provided comments that told us their priorities were sustainable transport, investing in cycle infrastructure, protecting green spaces and investing in renewable energy
- People responding to the priorities survey said they also want to see more electric cars, less pollution and reduction in waste, particularly plastic
- There are already lots of brilliant things taking place across the Borough, from the Allotments Stockport group helping residents to 'Grow Your Own' veg, to Plastic Shed which supports people from all walks of life to work together to reuse our plastic waste and turn it into something usable
- 56% responding to the priorities survey told us that one of the best things about living in Stockport is the access to parks and green spaces. They have also said this is one of the most important things for the future of Stockport.

PEOPLE TOLD US

"I want Stockport to become a greener place and make people aware of the impact of Climate change"
Olivia, age 13 Cheadle

"We must work together to take more action against tackling climate change"
Luke, age 15, Bramhall

"My aspiration for the future of Stockport environmentally is to have more electric cars so we make less pollution and improve the lives of people with asthma"
Beth, age 8, Cale Green Primary School

"Ensuring that Stockport Borough has an infrastructure which supports the local economy, connects communities and promotes health and wellbeing. Traffic-free cycling and walking routes will ensure this"
Martin, age 38, Heaton

THE ACTION WE WILL TAKE

- 1 Work together to build a **climate friendly Stockport**, taking action through a climate network of businesses, community and public sector organisations. We will encourage everyone to play their part by launching a climate summit which will be held in 2021
- 2 **Improve sustainable transport options** by encouraging active travel, developing 14 walking and cycling schemes by 2023 and continuing to improve the public transport through introduction of the Metrolink, creation of a new Cheadle train station, and improvements through bus franchising
- 3 **Protect and enhance our natural environment** and work together to plant 11,500 standard trees, create new woodland and ensure we have an orchard in every ward and meadows across the Borough by 2030
- 4 Create more **low carbon and energy efficient homes and buildings**. This will include 40% council housing stock to incorporate renewable energy by the end of 2021, reduction in emissions in council buildings by 10% by 2021 and install renewable energy systems in over 100 private homes by Sept 2021
- 5 **Increase renewable energy** by seeking funding to work with developers and local community groups to install large scale solar infrastructure in three locations within the Borough. Maximise sustainable energy systems through the Mayoral Development Corporation (MDC) which will see the creation of a District Heat Network to provide zero carbon energy to new developments including increased use of solar PV and ground source heat pumps
- 6 **Improve air quality** in Stockport by promoting active and public transport and introducing a Clean Air Zone in 2022
- 7 **Encourage all employers to increase carbon literacy** of the workforce, encourage sustainable travel and build climate considerations into the goods and services they procure.

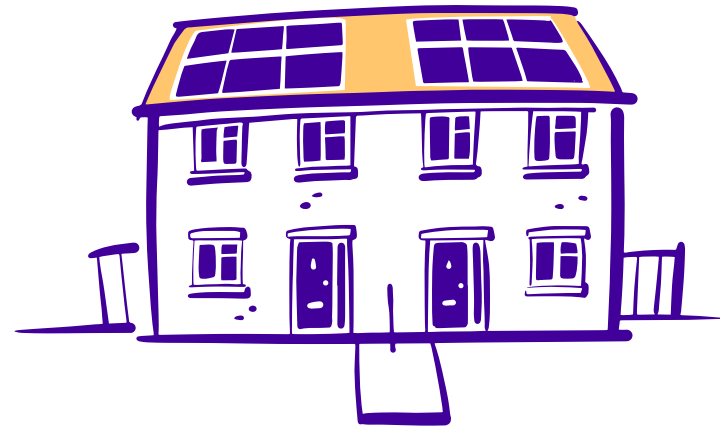


Sustainable Living in the Heaton

HOW WE WILL MEASURE SUCCESS

- Reduced levels of carbon emissions
- Improved levels of air quality
- More journeys undertaken through sustainable transport options
- Reduced waste and increased recycling.

This priority will be delivered through our [Climate Action Now³⁵](#) partnership



ONE FUTURE

Growing, creating and delivering a thriving future for Stockport.

Ambition SKILLS Literacy DIGITAL
JOBS Regeneration INTER-CHANGEx
EXCHANGE Success WEIR MILL Inclusion
CONNECT-IVITYx

- 1 An enterprising and thriving Stockport**
A thriving economy which works for everyone
- 2 A skilled and confident Stockport**
Everyone has the opportunities and skills to successfully achieve their ambitions
- 3 A radically digital Stockport**
A digitally inclusive and dynamic borough

1 An enterprising and thriving Stockport

OUR AMBITION:

A thriving economy which works for all our residents

Stockport is buzzing with regeneration, business and infrastructure transformation. The £1bn of investment we have attracted for Stockport's town centre revival has already:

- Created a food and beverage destination in Stockport's historic Market Place
- Created the new 'Redrock' leisure development anchored by the enormously successful Light cinema
- Opened a new commercial quarter in Stockport Exchange that is home to a number of major employers
- Redefined Town Centre Living with the development of several new housing projects, designed to appeal to the next generation of Stockport residents.

Across Stockport, we are proud to shop locally, using our historic high streets and supporting our local businesses who have become the heart of our communities. Stockport is also making a name for itself as the destination for new business and a place where existing businesses can grow, creating much-needed jobs within the area.

We're also making the most of the Borough's beautiful heritage buildings, rich creative history and eye-catching architecture, with some old mills being redeveloped into business and community hubs, ensuring Stockport's heritage lives on. We continue to create pride in our Borough by ensuring it is safe, well-maintained, has good quality roads and infrastructure, which in turn attracts additional investment.

Our vision is for Stockport to lead the way nationally in redefining what town centres can be and delivering the places and opportunities that make Stockport the best town in the north of England to live, learn, work, and play.

Visualisation of the new Underbanks area



HOW WE ARE ALREADY DEMONSTRATING OUR ENTERPRISING AND THRIVING AMBITIONS

Stockport Exchange

"Stockport is expanding all the time and the Stockport Exchange development is a prime example of the exciting opportunities being created for businesses to move to Stockport. 1 Stockport Exchange has already welcomed a number of high-profile brands such as Stagecoach, musicMagpie, Cafelito, Sainsbury's Local and Holiday Inn through its door and we are really keen to keep the levels of brands choosing Stockport as their home. 2 Stockport Exchange, which is situated close to 1 Stockport Exchange, has recently completed and will start to welcome new businesses in through their doors soon"

Tom, Muse Developments

Entrepreneurial Market Traders

"We knew we had to adapt, or we would be in danger of losing significant business thanks to the pandemic. The restrictions meant we had to close the market hall for the foreseeable future, so there would be no footfall through the market. All of the traders got together and discussed what we could do, and it was decided that we would be able to offer our customers an order and delivery service of fresh fruit, vegetables, meats and cheese boxes direct to their door within a three-mile radius of the market hall for a small fee. This meant we as the traders were able to keep trading and our loyal customers managed to receive the healthy food they were used to receiving"

Dan, Market Trader, Stockport Market

WHAT WE HEARD

- People enjoy living and working in Stockport
- It is an exciting time in Stockport – there is a buzz and lots of new opportunities developing
- The heart of Stockport is becoming a really great place to live with new residential developments and improved public spaces. The town centre living offer is changing
- Growing numbers of jobs are being created as businesses recognise the skilled workforce and key location
- Supporting local businesses is important. When asked 48% said they would support local businesses following the lifting of lockdown restrictions
- We have great proximity to transport links – the most connected town in the north
- The economy and recovery for Covid-19 is a concern but we don't want to lose our ambitions around regeneration and economic growth.

PEOPLE TOLD US

"There are terrific opportunities in Stockport and I think through the MDC we can be part of delivering a great deal of what is possible so we're really excited as a board"
Lord Bob Kerslake

"Support for independent businesses in the town centre and local events to encourage people to stay local"
Marie, 53, Tell us your Priorities Survey

"I love the town centre because there is lots of shops and activities. I enjoy going to Redrock cinema and to the Plaza to watch a play. I like that it is a very friendly place to be. There is also lots of parks and national trust places"
Alia, 9, Primary School student

"Longer term worry for my children not being able to afford to stay local when the time comes for them to move out. Schools are excellent which is a huge plus. Eating and drinking opportunities in Stockport borough are fantastic and this is a huge plus for our family"
Caroline, Cheadle Hulme South, Tell us your Priorities Survey

THE ACTION WE WILL TAKE

- 1 Invest in our Borough through **our ambitious Mayoral Development Corporation**, in particular:
 - **Restoration of Weir Mill** into a thriving residential and commercial space – opening up public access to the waterside
 - A **new state-of-the-art transport Interchange** improving local transport connections, along with a new green park and residential development
 - Introduce **new housing development** into the Town Centre including the development of a new town centre neighbourhood
 - Progress preparations to bring **Metrolink** to Stockport
- 2 Continuing to deliver the **regeneration strategy** for the Town Centre, such as further developments for Redrock and Merseyway, and through the Future High Streets Fund
- 3 In line with the Greater Manchester Local Industrial Strategy, support the development of the **green economy** and businesses that will contribute to achieving reductions in carbon and eventually carbon zero
- 4 Develop and deliver on a strategy for **thriving district and local centres**
- 5 Create **new innovation and start-up space in the Town Centre**
- 6 **Co-develop a Local Plan** which guides and informs the development of homes and jobs and protection of the built and natural environment by engaging with our communities and building in the aspirations of our children and young people on climate, green spaces and employment
- 7 Develop a broader framework for **inclusive growth**, promoting good development, enforcing against poor quality housing, buildings and the environment
- 8 Improve **connectivity** and reduce traffic congestion by delivering the A34 corridor improvement package, improving public transport and increasing opportunities for walking and cycling through the Mayoral Challenge Fund rights of way improvement plan.



HOW WE WILL MEASURE SUCCESS

- Increase in business start-ups and/or relocation
- Increased economic productivity
- Reduced unemployment with specific focus on our most vulnerable residents
- Reduced numbers of people not in employment, education or training.

This priority will be delivered through our Mayoral Development Corporation (MDC) Programme and Work and Skills Board



2 A skilled and confident Stockport

OUR AMBITION:

Everyone has the opportunities and skills to successfully achieve their ambitions

As we look to the future and 2030, we can be certain that the jobs people will do, how these will be carried out and the skills required will continue to change.

We know that Stockport's economy will need to grow and have the right mix of skills and qualifications in its workforce to support businesses to flourish and thrive. This will ensure they can provide high quality, well paid employment opportunities for residents and communities for the years to come.

This is an incredibly exciting time for Stockport with cutting edge entrepreneurs, nationally and internationally competitive employers and local innovators and changemakers – there has never been a better time to part of Stockport.

However, we know that Covid-19 has had a huge impact on the economy and has the potential to increase already established inequalities. We also know that stable and meaningful employment can transform people's lives. It has never been more important for us all to work together to support communities to improve their skill base, return to work or retrain, assist people into long-term secure employment and give them the tools they need to flourish at all stages of their lives.

New skill and employment progression



HOW WE ARE ALREADY DEMONSTRATING OUR SKILLED AND CONFIDENT AMBITIONS

Local business supporting local apprenticeships and sector connector involvement

"When I joined the Pure innovations Step course, I didn't think it would lead to a permanent position with a company, I was just hoping to learn some new skills and understand more about having a job. I started on the course back in 2019 and my first placement was within the NHS as an admin assistant – this really helped me build my confidence. Unfortunately when Covid hit I had to change placements and I went to Rowlinson Knitwear, who are a Stockport based clothing manufacturer.

I loved this placement as it gave me the ability to be more independent and to learn new skills in different departments. I saw each department as a new opportunity to thrive. I have also made some great friends at the company, who are all lovely and we all help each other out – a real team. When Rowlinson's offered me a permanent position I was over the moon – it's such a fab place to work."

Chloe, Rowlinson Knitwear

FarmStart Programme

"The Kindling Trust is a social enterprise based in Woodbank Park and the one thing we all share is a passion for our own fruit and veg, except our love of has grown! We offer our budding farmers and organic growers the opportunity to transition from community or allotment to commercial production through our FarmStart initiative. We provide training, equipment and land, as well as making dreams come true for many local small-scale growers. We're also making sure our produce makes it into the shops for the local community to buy."

The Kindling Trust

WHAT WE HEARD

- A growing number of jobs are being created as businesses recognise the skilled workforce and key location
- People, businesses and communities talked about the importance of inclusive employment opportunities which enabled local people and businesses to flourish
- We are a diverse Borough – we need to be bold and radical to address long-term unemployment
- 85% of jobs in 2030 do not yet exist – there are opportunities to build the skills of the future and grow talent in Stockport
- We would like to have stronger connections between schools and local employers – many young people don't know about the breadth opportunities in Stockport
- We want to inspire our children and young people in Stockport and ensure they have the right support to be confident and have the skills to succeed
- There are increasing rates of unemployment due to the impact of the pandemic on key sectors such as hospitality and retail, particularly affecting young people. The percentage of young people (aged 18-24) claiming unemployment related benefits has risen significantly in recent months and is higher than national and regional averages
- Unemployment amongst 16-24 year olds is set to increase from around 5% to 11% this year, with fewer school leavers in employment, education or training
- In the priorities survey, a quarter of respondents told us that investment in the town and district centres which creates more employment opportunities for local people is important to them.

PEOPLE TOLD US

"As businesses we need to look at things like training and apprenticeships as an investment and not an expense. We have an amazing opportunity to develop young people within our communities"

Nick, Leadership workshop

"Improve employment opportunities for all young people but especially those with additional needs"

Julia, 42, Marple

"There are a lot more things that we could do to help with ageing well, more inclusion for people who feel isolated, we could look at ways to support digital exclusion by providing more access to digital skills training"

James Scott, Stockport College

"Mental well-being is linked to access to green space and cultural participation. Investment and development in these areas can also aid the meeting of climate goals and focussing on these can produce results in air quality and personal health. It can also help provide locally rooted jobs and stimulate economic development"

Mark, Marple, Tell us your Priorities Survey

THE ACTION WE WILL TAKE

- 1 We will use One Stockport as a platform to build on existing partnerships to connect schools, colleges, businesses through a **new skills and employment programme** that inspires future generations and ensures that the right training, opportunities and qualifications are available locally. Recognising the valuable skills and contributions of all our residents at all stages of life
- 2 **Supporting all employers to recruit from our priority groups of young people not in employment** through the Grow the Steps to Work scheme as well as through developing inclusion supported employment and recruitment practice, including Care Leavers, Young People with SEND needs, and young people that are NEET (Not in Education, Employment, or Training)
- 3 **Embed ethical employment** by
 - Working collectively to support businesses to achieve the Good Employment Charter standard
 - Increasing the number of jobs paying the living wage and support the development of cooperative and employee ownership models of business
- 4 Develop a partnership **Youth Employment hub** particularly promoting key programmes such as Kick-Start
- 5 **Continue to promote apprenticeships** to ensure that we support those who need it to enter the labour market, progress in their careers and achieve higher levels of earnings in secure employment. This includes increasing **apprenticeship opportunities across local employers, including public services, for young people with SEND and those who are long term unemployed**
- 6 Continue to review the education offer around **lifelong learning**, particularly focussing on the all-age strategy to support people at all stages of their lives from retraining, getting back into employment, adult literacy or those not accessing this support as much as others
- 7 Support the continued delivery of Greater Manchester **employability programmes** such as Working Well in Stockport, ensuring that Stockport residents and businesses benefit from these opportunities.

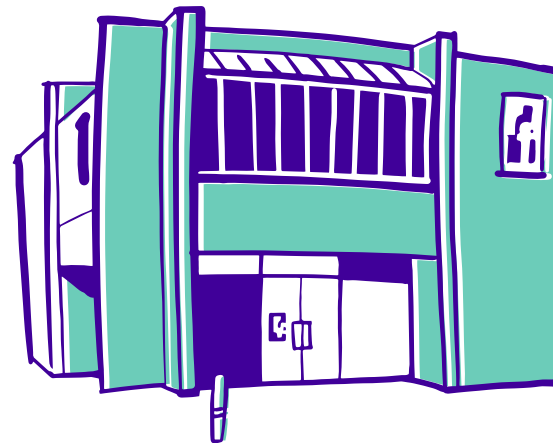


Building skills and confidence

HOW WE WILL MEASURE SUCCESS

- Reduced unemployment **with specific focus on residents most vulnerable to unemployment**, for example;
 - People with disabilities, learning difficulties or long-term health conditions
 - Ethnically diverse communities
 - Long term unemployed
 - Younger and older residents impacted by unemployment
 - Other groups disproportionately affected
- Reduced numbers of young people not in employment, education or training
- Increased take up of apprenticeships (as well as high quality level 3 and level 4 provision)

This priority will be delivered through our Work and Skills Board



3 A radically digital Stockport

OUR AMBITION: An inclusive and radical digital Borough

Stockport challenges itself to be a radical digital Borough.

A place that maximises the opportunities of the digital era for all of its communities and where everyone is digitally included. Digital technologies are fast evolving and there is much about the future that we cannot predict. However, we are in a strong place as we look toward 2030. We have an award-winning digital council, numerous successful digital employers, ever increasing numbers of digital businesses across the Borough and a strong digital inclusion partnership in place.

Over the course of 2020 our digital ambitions as a Borough were supercharged through flexible and home working at pace and scale, the expansion of our digital inclusion response and the rapid and innovative adaptation of digital technologies by businesses and organisations to continue delivering support and services to customers and clients.

This rapid change has long lasting impacts – changing how we shop, socialise and work well beyond and into the future. We want to build on this progress, work together to address the digital divide, to ensure Stockport gets the most out of the opportunities from digital innovation so we can continue to be at the forefront in shaping our digital future.

Starting Point Digiknow community class



HOW WE ARE ALREADY DEMONSTRATING OUR DYNAMIC AND DIGITAL AMBITIONS

DigiKnow - Digital Inclusion Alliance

"We established the DigiKnow Alliance in 2018, as a collaboration between Stockport Council, Stockport Homes, The Prevention Alliance, Starting Point Community Learning Partnership and Good Things Foundation. It was established to help Stockport residents who weren't online gain access to digital skills, grow their confidence and make connections. By having access to the internet we have seen people gain employment, connect more with friends and family, take control of their health and smile more.

Since it was established, a further 33 business, voluntary and public sector partners have joined DigiKnow, and together we have helped over 9,000 residents to get online and recruited over 50 digital champions volunteers to act as mentors. The success is down to all partners who have worked as equals towards one goal of supporting people to be online. This approach led us all to win the MJ Digital Transformation award on 2019.

When the pandemic hit we knew that the role of technology had a huge part to play in people's lives, and together we adapted our services fast. Within a month a dedicated helpline was established offering digital support to residents as well as the DigiKnow lending library which has seen over 1,000 devices and data loaned to our community to help with home schooling and job recruitment. There

has been a real passion to work collectively and what happened in the two years before COVID, only paved the way to respond and expand as we have. No one part of the collaboration could have done it without the others and there has been a real recognition of that."

Starting Point Community Learning Partnership

Digital start up space

"Being able to have a digital hub all in one place is fantastic for Stockport's start-up companies and creates a real sense of creativity and knowledge sharing. The Stockport Business Innovation Centre (SBIC), is based within Stockport's old Broadstone Mill is a thriving environment for SME's to grow and collaborate creatively."

Stockport Business Innovation Centre

WHAT WE HEARD

- Our communities and teams have come together and doing things digitally has helped people stay together and collaborate
- Responding to the third and readying for the fourth industrial age –it is estimated that 85% of jobs in 2030 haven't been invented yet³⁶. We need to be more than digital ready, but digital shaping
- We want to be inspired, to innovate, leading the way digitally, both regionally and nationally
- More and more digital and technology roles are located in Stockport

- While around 87% are digitally included, around 13% of our community are digitally excluded. While digital inclusion is more prevalent amongst older people (54%), it is most common for people who experience other forms of social exclusion and poverty
- Over 9,000 people have accessed digital inclusion support in Stockport to help them build confidence
- It is important that people with differing levels of verbal communication can make the most of digital technologies to ensure they can participate fully in all aspects of life and have their voices heard
- Residents expect 21st century services. Digital technologies can deliver better customer experience
- Internet use has doubled during 2020 as more people worked from home, reshaped their business offer and stay in touch with friends and family virtually.



PEOPLE TOLD US

"We are moving to a completely paperless environment and it is key there is the infrastructure in place from a capacity, speed and security to support this"

Martin, Business Summit attendee, January 2020

"Covid has changed our habits and way of living forever, we are much more reliant on digital technologies to shop, stay in touch and work than ever before"

Steve Oliver - Music Magpie, December 2020

"Access to cultural opportunities and digital access helps educate our youth and entertain our older people"

Helen, Hazel Grove
Tell us your Priorities Survey

"Around 1 in 5 people in Stockport have no or little access to the internet. These people are more likely to be unemployed or on a low income and may be prevented from going online by the cost of access. Being able to borrow a device and having support from our Digital Champions to use that device, will help them to become digitally included, stop them missing out on potential employment opportunities and bring wider social benefits"

Ryan, Starting Point Learning Partnership

THE ACTION WE WILL TAKE

- 1 **Develop a Digital Strategy** for Stockport to capture our collective digital aspiration, priorities and approaches to delivering these. Including identifying opportunities to join up digital services and maximise investment opportunities
- 2 Aligned to our Digital Strategy, **design a SMART cities programme**
- 3 Design a **new joined-up preventative support offer** which supports independence and self-care (including: Information, advice and guidance; digitally enabled social connectivity)
- 4 Further **invest in tele-care and health and technology assisted living** to enable people to live independently. This will include investing in assistive technology in new intergenerational housing (All Age Living Campus) and investing in digital platforms for Care Homes
- 5 Continue to develop **digital infrastructure** – ensuring all in our Borough have access to full fibre digital and expanding access to 5G across our Borough
- 6 Continue to build a **sustainable Digital Inclusion movement** through our lending library, digital skills and assisted digital offers. With an ambition to have a 100% digitally included Borough
- 7 Establish **Digital Skills Partnerships between Further Education Providers and local employers**
- 8 **Investment in innovation space** across the Borough to nurture digital entrepreneurship. Including development of an innovation area in Merseyway; options appraisal for Stockport Exchange location; and, developing proposals to attract investment for further co-working space.

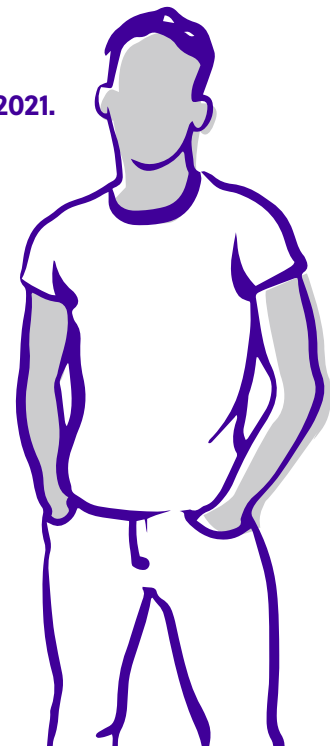


Profolk: Co-working and flexible office space in Stockport

HOW WE WILL MEASURE SUCCESS

- Increase digital inclusion (100% inclusion – incorporating the breadth of digital inclusion approaches including assisted digital)
- Increase number of residents living independently assisted by technology
- Improve digital literacy levels across the Borough
- Increase employment in digital sector in the Borough
- Increase the number of digital start-ups and digital / technical businesses in the Borough
- Improve connectivity via 5G network, broadband and WIFI coverage.

This will be delivered through a Digital Strategy for the Borough. This will be developed in partnership during 2021.



NOTES

- 1 One Stockport Borough Plan Engagement Report – Appendix 1
- 2 Digi Know – Help with digital skills and online safety – <https://www.stockport.gov.uk/get-online/digiknow-helping-stockport-get-online>
- 3 Stockport Family – <https://www.stockport.gov.uk/topic/stockport-family>
- 4 Stockport State of the Sector Report – <http://www.10gm.org.uk/assets/files/GM-State-of-the-Sector-Stockport-FINAL.pdf>
- 5 Stockport Ageing Well Strategy – <https://www.stockport.gov.uk/age-friendly-stockport>
- 6 Stockport All Age Living Prospectus – <http://democracy.stockport.gov.uk/documents/s154184/Enc.%201%20for%20All%20Age%20Living%20Prospectus%20Healthy%20Happy%20Homes.pdf>
- 7 Schools attainment – <https://www.stockport.gov.uk/inspections-performance-achievements-and-attainment/achievement-and-attainment>
- 8 Stockport's Special Educational Needs and Disabilities (SEND) Strategy 2020-23 – <https://stockport.fsd.org.uk/kb5/stockport/fsd/site.page?id=KVzTG4wnE5I>
- 9 Safer Stockport Partnership – <http://www.saferstockport.org.uk/>
- 10 Stockport Joint Strategic Needs Assessment – <http://www.stockportjsna.org.uk/>
- 11 2018 ONS population projections – <https://www.ons.gov.uk/peoplepopulationandcommunity/populationandmigration/populationprojections/datasets/localauthoritiesinenglandtable2>
- 12 2018 ONS population projections – <https://www.ons.gov.uk/peoplepopulationandcommunity/populationandmigration/populationprojections/datasets/localauthoritiesinenglandtable2>
- 13 DfE Performance Tables – <https://www.gov.uk/government/collections/statistics-performance-tables>
- 14 GMCA Police and Community Safety Survey – June 2020
- 15 Stockport Joint Strategic Needs Assessment – [http://www.stockportjsna.org.uk/Fingertips Public Health Profiles](http://www.stockportjsna.org.uk/Fingertips%20Public%20Health%20Profiles) <https://fingertips.phe.org.uk/profile/health-profiles>
- 16 Our Plan for walking and cycling in Stockport 2019-2029 – <https://www.stockport.gov.uk/our-plan-for-walking-and-cycling-in-stockport-2019-2029>
- 17 Stockport to Manchester approx. journey time 10 minutes. Gatley to Marple approx. journey time 1 hour
- 18 Stockport State of the Sector survey 2017 – <http://www.10gm.org.uk/assets/files/GM-State-of-the-Sector-Stockport-FINAL.pdf> Count of Mutual Aids includes number of individual mutual aid networks that have been established since March 2020.
- 19 Sourced from UK Powerhouse Report and based on Gross Value Added (GVA) – <https://www.irwinmitchell.com/news-and-insights/in-focus/powerhouse>
- 20 Indices of deprivation 2019 – <https://www.gov.uk/government/statistics/english-indices-of-deprivation-2019>
- 21 Stockport Climate Action Now Strategy – <https://www.stockport.gov.uk/can-climate-strategy-stockport/can-overview>
- 22 Between October 2019 and October 2020, Universal Credit claimants doubled from 4,725 to 10,685 – <https://www.gov.uk/government/collections/universal-credit-statistics>
- 23 Marmot Review, Build Back Fairer – <https://www.health.org.uk/publications/build-back-fairer-the-covid-19-marmot-review>
- 24 One Stockport Borough Plan Engagement Report – section 16
- 25 Overview of Stockport SEND improvement Journey – <https://stockport.fsd.org.uk/kb5/stockport/fsd/site.page?id=TowHtGA4q7o>
- 26 Stockport Children and Young People's Strategy – http://democracy.stockport.gov.uk/documents/s181247/Stockport%20Children%20and%20Young%20Peoples%20Strategy%202020_2023.pdf
- 27 Stockport Shared Outcomes Framework – https://stockport.fsd.org.uk/kb5/stockport/fsd/advice.page?id=refl_wFOjT0
- 28 Stockport Coproduction Charter – <https://stockport.fsd.org.uk/kb5/stockport/fsd/site.page?id=nudlaU2nLlw>
- 29 Stockport Children and Young People's Strategy – http://democracy.stockport.gov.uk/documents/s181247/Stockport%20Children%20and%20Young%20Peoples%20Strategy%202020_2023.pdf
- 30 ONS population and community – healthy life expectancy – <https://www.ons.gov.uk/peoplepopulationandcommunity/healthandsocialcare/healthandlifeexpectancies/bulletins/healthstatelifeexpectanciesuk/2015to2017>
- 31 Stockport JSNA – <http://www.stockportjsna.org.uk>
- 32 GMCA Police and Community Safety Survey – June 2020
- 33 Safer Stockport Plan 2018-21 – <http://www.saferstockport.org.uk/wp-content/uploads/2018/06/Safer-Stockport-Partnership-Plan-2018-to-2021.pdf>
- 34 Stockport Ageing Well Strategy – https://assets.ctfassets.net/ii3xdrqc6nfw/4ocnpVqJC3GhW2pYvLFOJ/656260ad55fac63d3b2ef2558782a227/Stockport_Ageing_Well_Strategy_for_Stockport.pdf
- 35 Stockport Climate Action Now Strategy – <https://www.stockport.gov.uk/can-climate-strategy-stockport/can-overview>
- 36 Dell Technologies, Emerging Technologies' Impact on Society and Work in 2030 – https://www.delltechnologies.com/content/dam/delltechnologies/assets/perspectives/2030/pdf/SR1940_IFFTforDellTechnologies_Human-Machine_070517_readerhigh-res.pdf

ONE
STOCKPORT

FURTHER INFORMATION